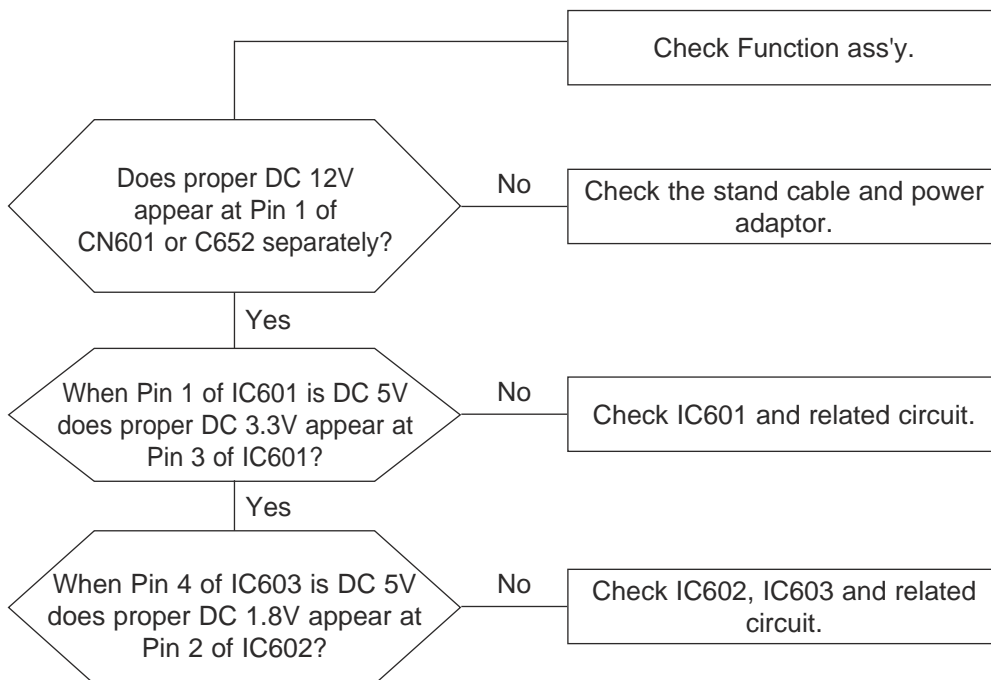


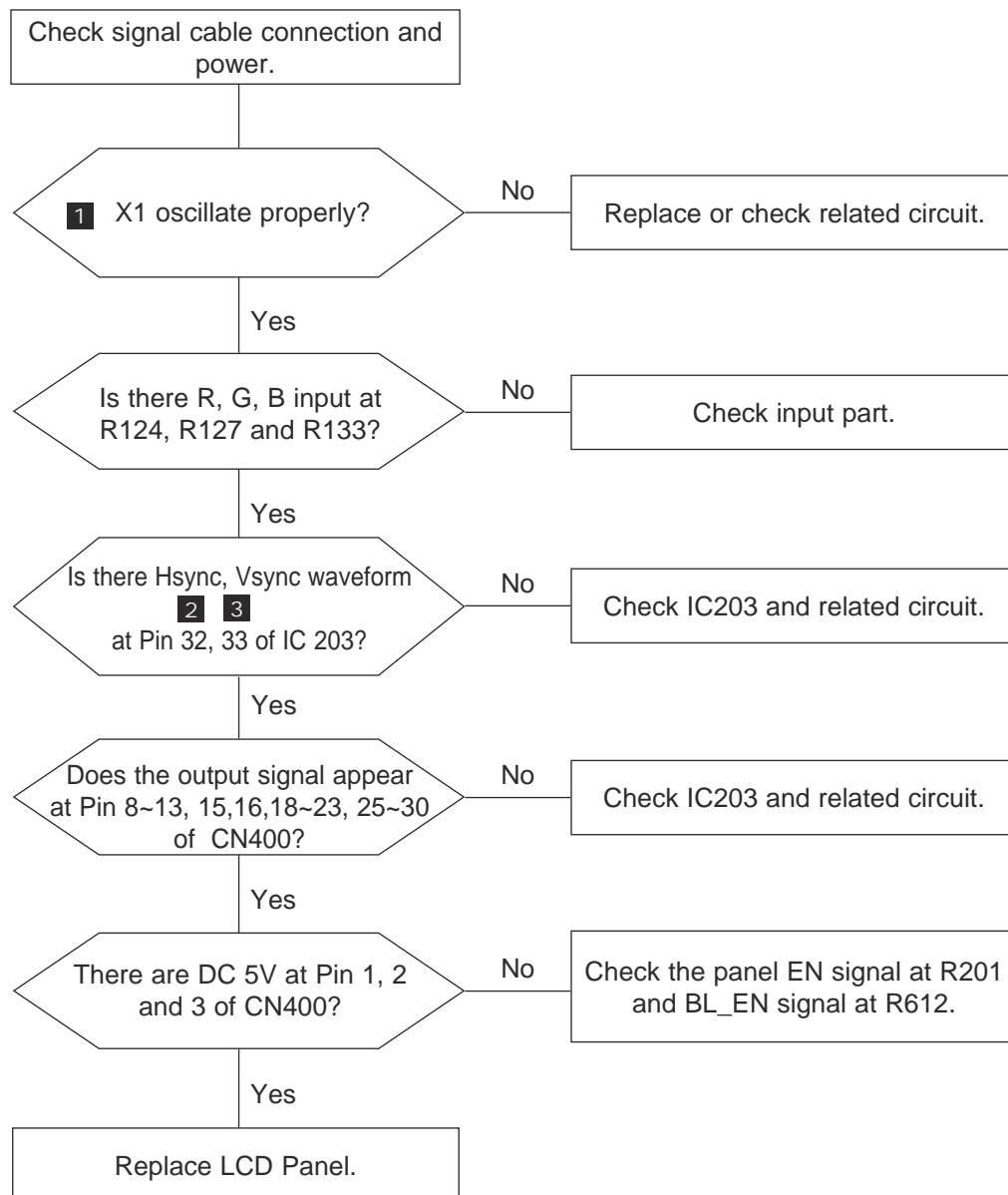
4 Troubleshooting

- Notes:**
- Before troubleshooting, setup the PC's display as below.
 - Resolution: 1280 x 1024
 - H-frequency: 64 kHz
 - V-frequency: 60 Hz
 - If no picture appears, make sure the power cord is correctly connected.
 - Check the following circuits.
 - No raster appears: Function PBA, Main PBA, Inverter
 - 5V develop but no screen: Main PBA
 - 12V, 5V does not develop: Adaptor, Main PBA
 - During power off if you push and hold the "Power key" button for more than 5 seconds, the monitor automatically returns to the factory preset.

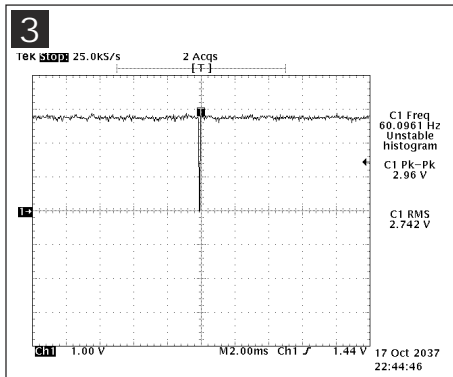
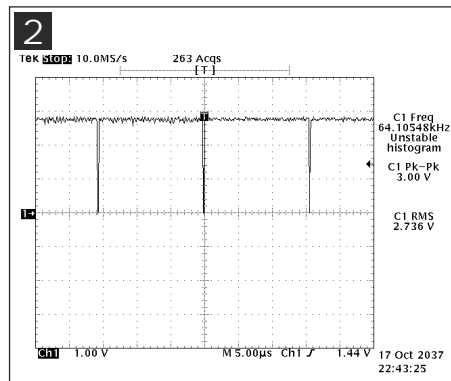
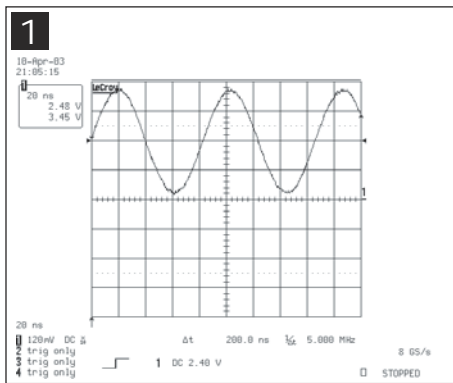
4-1 No Power



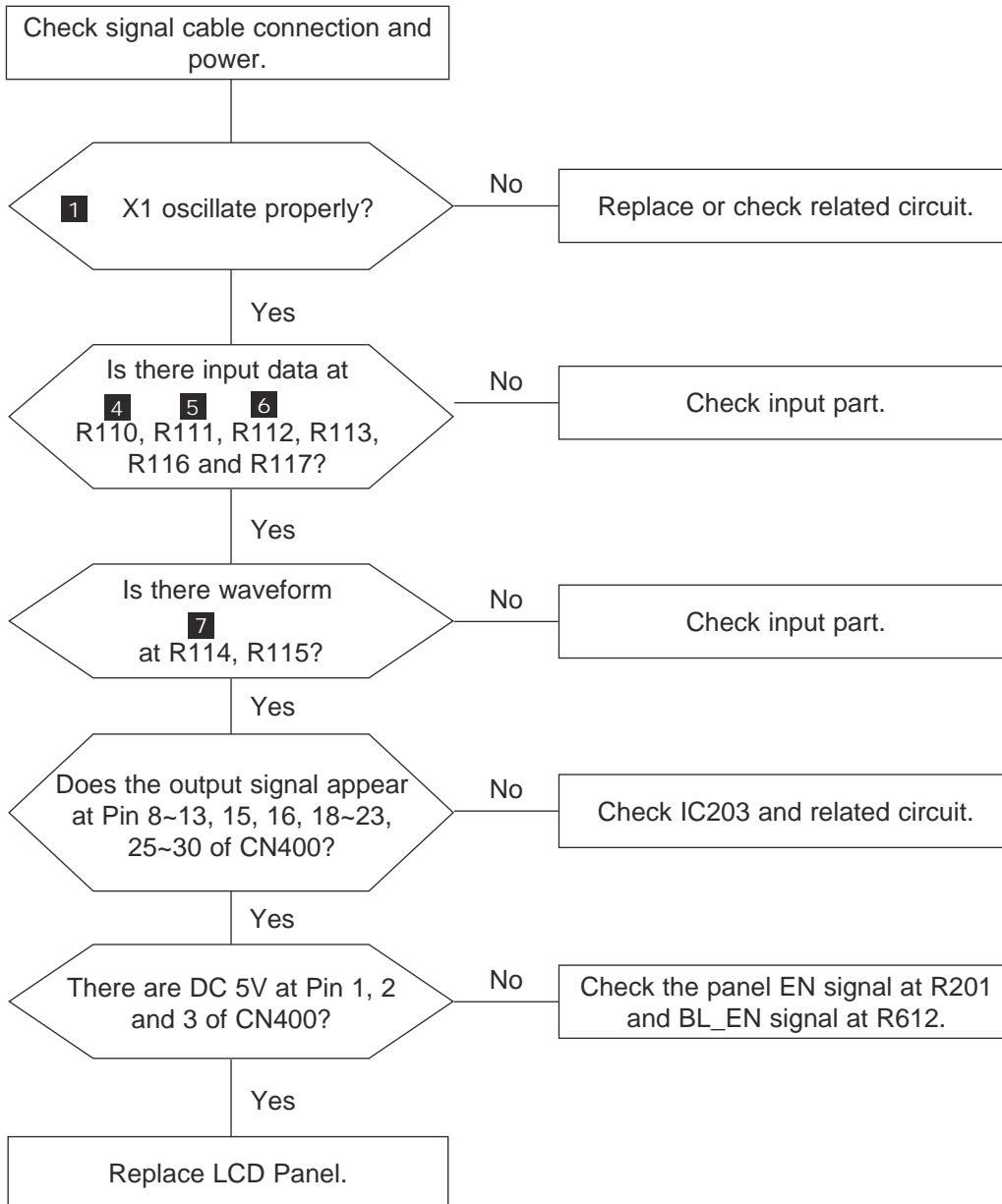
4-2 No Video (ANALOG)



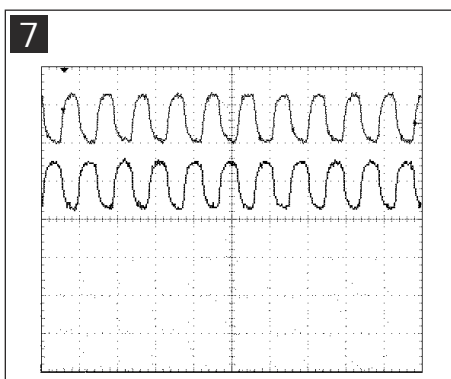
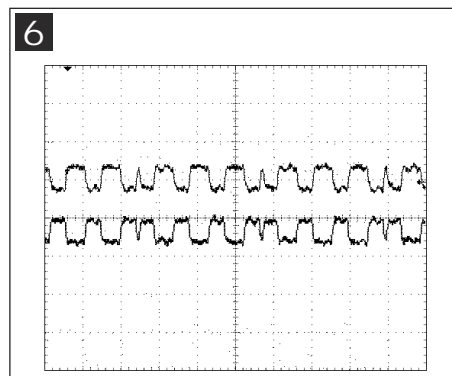
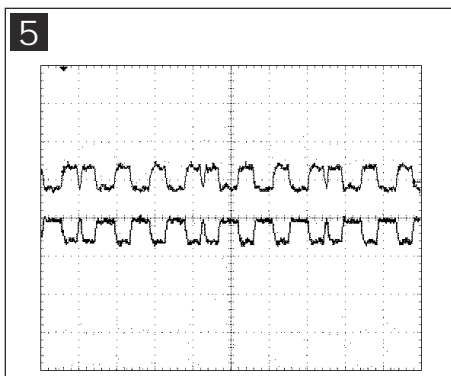
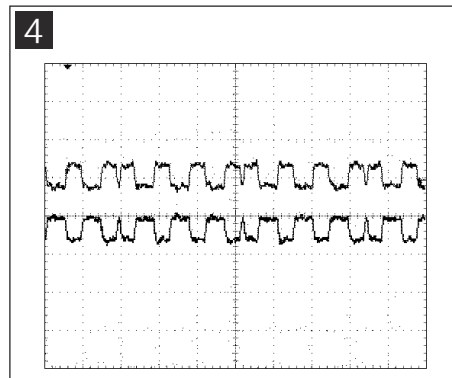
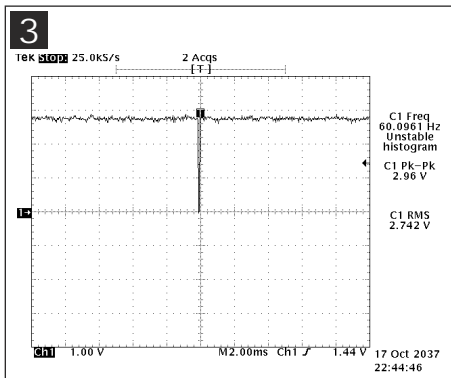
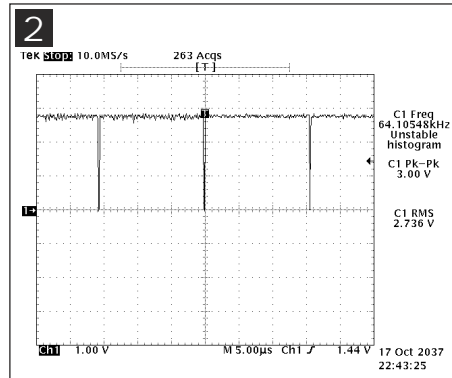
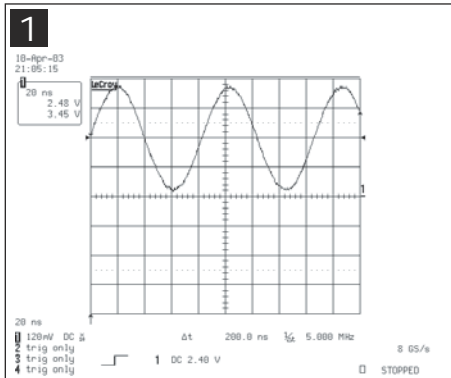
WAVEFORMS



4-3 No Video (DIGITAL)



WAVEFORMS



Memo